

105

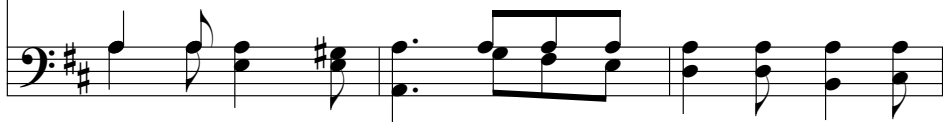
People, Look East



1 Peo - ple, look east. The time is near of the
 2 Fur - rows, be glad. Though earth is bare, one more
 3 Birds, though you long have ceased to build, guard the
 4 Stars, keep the watch. When night is dim one more
 5 An - gels, an - nounce with shouts of mirth Christ who



crown - ing of the year. Make your house fair as you are
 seed is plant - ed there. Give up your strength the seed to
 nest that must be filled. E - ven the hour when wings are
 light the bowl shall brim, shin - ing be - yond the frost - y
 brings new life to earth. Set ev - ery peak and val - ley



Peo - ple, look



a - ble; trim the hearth and set the ta - ble.
 nour - ish, that in course the flower may flour - ish.
 fro - zen God for fledg - ing time has cho - sen.
 weath - er, bright as sun and moon to - geth - er.
 hum - ming with the word, the Lord is com - ing.



This text was written to provide a new Advent text for an existing carol tune, here named for the city in eastern France where it originated. The author has imaginatively expressed the cosmic implications of Christ's coming by addressing each stanza to a part of creation.

JESUS CHRIST: ADVENT

east and sing to - day:



Peo - ple, look east:

Love, the Guest, is on the way.

Love, the Rose, is on the way.

Love, the Bird, is on the way.

Love, the Star, is on the way.

Love, the Lord, is on the way.

Peo - ple, look east:

(Love is on the way.)

